



## President's Message

The RAS Spring Lecture featured Dr. Paul Graman who spoke about Ebola and preparations at Strong Memorial Hospital to treat patients with the disease. A disappointingly small number of people attended the lecture held at Nazareth College. However, the audience was very interested and kept the speaker busy afterwards with questions and conversation. I would like to acknowledge Bill Hallahan for arranging the venue and Karen Wolf for displaying RAS publications and herbarium specimens. The refreshment table was organized by Helen Haller and she was joined by Michael Grenier who treated us to donuts and hot drinks.

Many thanks to my colleagues on the Board who are volunteering their time and talent once again to serve as officers in the upcoming year (see election results article). We still lack a special person to oversee membership, and someone to act as director.

Mark November 7 on your calendar. The Fall Paper Session **will** be held that day at Finger Lakes Community College. A public lecture will be offered by RAS at the event and we welcome recommendations for topics of interest or specific speakers.

The Academy will participate at two upcoming events: Science Exploration Days in mid-May (see article below) and the ADK Outdoor Expo in early June. Do volunteer to help at these events! Spread the joy of learning about the natural world and promote the Rochester Academy of Science!

*Jutta Siefert Dudley*

\* \* \*

## RAS at Science Exploration Days 2015 Volunteers Needed

On Thursday evening, May 14 and on Friday the 15<sup>th</sup>, the Academy will again have an important presence at Science Exploration Days, an annual event at St John Fisher College that is organized by the Central Western Section of the Science Teachers Association of NYS. For 44 years the program has focused on acquainting young people with research, scientific concepts, applied technology, local natural history, and various topics beyond the standard curriculum.

RAS hands-on activities and informative displays in the exhibit hall teach and enlighten visitors of all ages. We provide telescopes, minerals, fossils, and

edible plants, so visitors stopping at our tables have something interesting to see, do, and learn. To do all this well, we need your help!

As a volunteer, at the Thursday evening program for example, you will meet families excited to learn something new. During the school program on Friday, you'll interact with some of the 1300 registered students in grades 7 through 12.

Let your Section Leader know you can help! Section leaders, for information about section table set up on Thursday afternoon contact Karen Wolf, who serves as RAS exhibits liaison with the SED committee:

[karen\\_wolf@urmc.rochester.edu](mailto:karen_wolf@urmc.rochester.edu)

## SED Volunteer Schedule:

**Thursday afternoon:** exhibit set up in Student Life Center 2 p.m.

**Thursday evening, 7- 9 pm:** Exhibit hall open to the public.

**Friday: 9:30- 1:00 pm:** Registered students attend seminars and visit exhibit hall

**Friday: 1:00 pm:** Free wine reception and luncheon for presenters and exhibitors.

For information about the overall program contact Jutta Dudley, a member of the CWS-STANYS SED committee.

\* \* \*

### **Election Results for the year June 2015-May 2016:**

President: Jutta Siefert Dudley,  
Ph.D.

Vice President: Jeffrey  
Gutterman, PE

Secretary: Helen Downs Haller,  
Ph.D.

Director (3 year): Frank Bov

Positions open are Director and  
Membership Chair.

\* \* \*

The following article is an  
abstract presented at the 2014  
RAS Fall Paper Session.

### **EURYPTERIDS AND THE ORIGIN OF THE LATE SILURIAN AKRON FORMATION OF WESTERN NEW YORK AND SOUTHWESTERN ONTARIO, CANADA.**

Samuel J. Cieurca, Jr.  
2457 Culver Road, Rochester,  
New York 14609

Eurypterid horizons represent  
some of the most unusual  
stratigraphic events in the  
geologic history of the Paleozoic  
of New York and adjacent  
regions. While many of the  
horizons are actively under study  
(viz. Bertie Group), little attention  
is being paid to intervening strata  
– that is, the sedimentary rocks  
occurring between (or sandwiched  
in) eurypterid horizons.

Within one important sequence  
(the Bertie Group as redefined by  
Cieurca, 1990), the massive and  
geographically extensive Akron

Formation separates the  
eurypterid faunas of the  
Williamsville Formation from the  
stratigraphically higher fauna of  
the Moran Corner Waterlime.

Here, I suggest that the Akron  
Formation (primarily dolostone),  
as it occurs in western New York  
and southwestern Ontario,  
Canada, represents a shelf deposit  
created by microbialites  
(thrombolites, stromatolites/algal  
mats). Carbonaceous bedding  
planes (often stylolitic), usually  
quite irregular, seem to present  
interlocking and overlapping  
microbialites that trapped  
carbonate sediment, building up  
the shelf. Stromatolites are rare to  
absent in this facies. However,  
overlying waterlimes (e.g. Moran  
Corner) appear to have been  
formed in a stromatolitic  
(shallowing-up) environment.  
Westward (e.g. southwestern  
Ontario), the Akron Fm. appears  
to become more fine-grained and  
almost completely recrystallized  
and exhibits, more than other sites  
seem to, extreme bioturbation  
while still preserving microbial  
mats that show intense burrowing  
with scant fauna preserved  
(ostracods, high-spined gastropods  
and a few brachiopod species). A  
peculiar bluish clay, origin  
unknown, is common in this  
facies associated intimately with  
the carbonaceous material.  
No eurypterid remains are  
definitely known from most of the  
Akron Fm. However, with  
numerous facies changes  
occurring eastward (Syracuse to  
Forge Hollow), eurypterids are  
found at several levels within  
both the limestone and dolostone  
facies (e.g. Martisco Reef  
Complex, Cobleskill Formation at

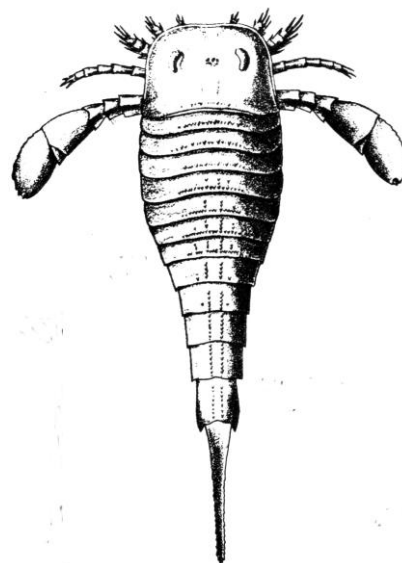
Forge Hollow and Oriskany Falls,  
etc.). Also see New York State  
Geological Association Field Trip  
guidebooks for 2011 (pages 139 -  
151) and 2013 (pages 154 -179).

### **Did You Know ...**

...that in 1984, *Eurypterus  
remipides* became the NYS  
fossil?

...that the first *Eurypterus*  
specimen was found in Oneida  
County in 1818 and later  
identified as an arthropod in  
1825?

... that the Silurian Period  
strata in NYS is where you can  
find eurypterid fossils?



# Events for May, 2015

For updates to events, check the Academy website, <http://www.rasny.org>, and Section websites.

## **Fri 1 ASTRONOMY SECTION MEETING**

7:30 p.m.–10:00 p.m RIT, Gosnell Hall, Room A300. ASRAS General Members Meeting. UR Professor Eric Mamajek will speak about extra-solar J1407 Eclipsing Ring System and the closest known flyby of a star near our solar system. For more information, contact Valerie Rapson at (585) 301-3424.

## **Sat 2 MINERAL SECTION FIELD TRIP**

6:45 a.m – noon. Penfield Quarry Open House, 746 Whalen Road. All ages welcome – open to the public! Hard hats (children may wear bicycle helmets), safety glasses, sturdy foot-wear, & long pants required. Expect to find fluorite, calcite, selenite, sphalerite, dolomite, gypsum, galena & fossils. For more information, contact Stephen Busschaert at [mineralvp@rasny.org](mailto:mineralvp@rasny.org) or 585-732-5321.

## **Fri 8 FOSSIL SECTION MEETING**

7:30 p.m. Brighton Recreation Center off Winton Road north of 590 interchange. Our speaker will be Dr. Gordon Baird of SUNY Fredonia and he will be giving us an update of his ongoing work in the Upper Devonian of New York, Ohio and

Pennsylvania. The first half of the fieldtrip schedule is in the process of being finalized and will appear in the May issue of the Fossil newsletter. Refreshments will be served immediately following the talk. For more information, contact Dan Krisher at 293-9033.

## **Tues 19 MINERAL SECTION MEETING**

7:00 p.m.-9:00 p.m. Downstairs Meeting Room. Brighton Town Hall, 2300 Elmwood Ave. Rochester, NY 14618. Join us for a talk and film about "Gold Mining Today in California" by Brian McGrath. To add to the fun, bring along your own minerals for display. Door prizes and refreshments. For more information contact Stephen Busschaert at [mineralvp@rasny.org](mailto:mineralvp@rasny.org) or 585-732- 5321.

## **Wed 20 RAS BOARD MEETING**

7:00 p.m. Brighton Town Hall, Stage Conference Room.

## **Fri 22 ASTRONOMY STAR PARTY**

9:30 – 10:45 p.m. Mendon Ponds Park Youth Camping Area. For more information, contact Jim Seidewand at (585) 703-9876.

## **ONGOING EVENT**

ASRAS will operate the telescope, or one on the sidewalk,

at Strasenburgh Planetarium on mostly clear Saturday nights. Contact Jim Seidewand at (585) 703-9876.

## **OUTSIDE RAS EVENT**

### **Thurs 14, Fri 15 SCIENCE EXPLORATION DAYS**

St. John Fisher College, Student Life Center.  
2:00 p.m. Thursday: RAS sets up exhibit tables.  
7:00 – 9:00 p.m. Thursday: Exhibit Hall Open and Free to families.  
9:30 a.m.-12:45 p.m. Friday: Junior and High School Students Program includes time in the Exhibit Hall and 2-3 short classroom lectures.  
1:00 p.m. Friday: Free wine reception and luncheon for presenters and exhibitors.

**Rochester Academy of Science**  
**P.O. Box 92642**  
**Rochester, NY 14692-0642**  
 Return Service Requested

NON-PROFIT ORG.  
 U.S. POSTAGE  
**PAID**  
 ROCHESTER, N.Y.  
 PERMIT NO. 220

---

May, 2015 - Vol. 69, #5, Page 4

**ABOUT THE ACADEMY** - The Rochester Academy Of Science, Inc. is an organization that has been promoting interest in the natural sciences since 1881, with special focus on the western New York state region. Membership is open to anyone with an interest in science. Dues are minimal for the Academy and are listed in the membership application. Each Section also sets dues to cover Section-related publications and mailings. For applications and/or more information, contact Jutta Dudley, 140 Railroad Mills Road, Pittsford, NY 14534; by telephone (585) 385-2368; or by e-mail <pres@rasny.org>. The **Academy** Internet website is <http://www.rasny.org> Or see us on Facebook at <https://www.facebook.com/RochesterAcademyOfScience>

---

This “**BULLETIN**” is produced monthly, *except July and September*, by the **Astronomy Section, Rochester Academy of Science**. Submissions are due by the 10<sup>th</sup> of the month, and may be emailed to editor@rasny.org

**ROCHESTER ACADEMY OF SCIENCE OFFICERS**

		<b>Phone</b>	
		(585) home	work
Jutta Dudley	President	385-2368	
Jeff Gutterman	Vice President	392-8299	789-1364
Helen D. Haller	Secretary	387-9570	
William Hallahan	Treasurer	624-1628	389-2552
Open	Membership		
Stan Spector	Past President	461-1272	
Karen Wolf	Anthropology	670-9709	273-4500
Valerie Rapson	Astronomy	(cell) 301-3424	
Lawrence Hirsch	Life Sciences	429-6199	
Dan Krisher	Fossil	293-9033	
Stephen Busschaert	Mineral	732-5321	
Elizabeth Pixley	Herbarium	334-0977	
Jutta Dudley	Publications	385-2368	
Bob Crumrine	<i>Bulletin</i> Editor	(cell) 813-4157	
William Hallahan	Student Grants	624-1628	389-2552
Paul Dudley	Website Coordinator	385-2368	
Reginald Smith	Director '16	244-4979	
Michael Grenier	Director '16	671-8738	
Frank Bov	Director '18	385-1518	422-9910
Douglas Kostyk	Director '17	943-3419	
Lee Tutt	Director '17	872-3033	
Open	Director '18		

The Academy Postal address is P.O. Box 92642, Rochester, NY 14692